

*MB CONVEYORS SOLUTIONS*

**MB**   
Conveyors

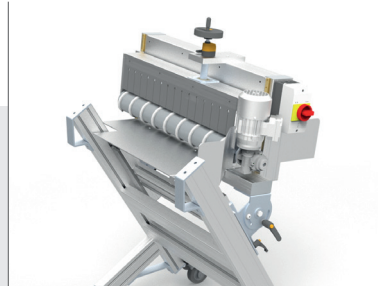
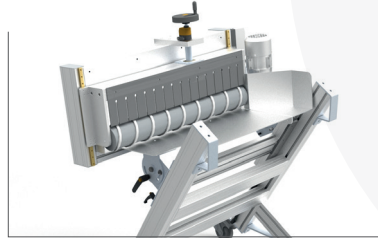


*NEW FSRV PLUS*



*mbconveyors.com*

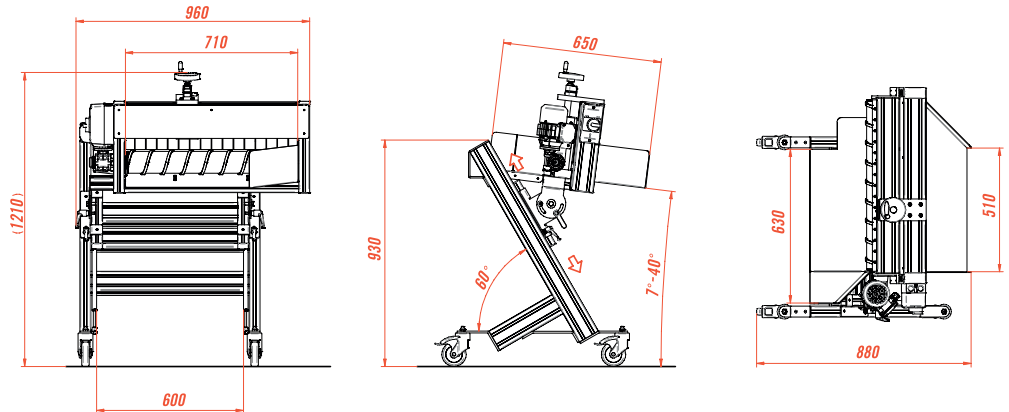




The brush placed over the spiral roller prevents the sprues from passing above the roller itself

Longer roller (710 mm) to increase separation efficiency

**STANDARD  
DIMENSION**



**MAIN FEATURES**

- Stand-alone separator device, designed to optimize the space occupied by the box underneath.
- Separator chute realized in stainless steel AISI 304 with gas pistons-aided adjustable inclination
- Gas pistons-aided, adjustable loading and unloading height
- Spiral roller fixed on both ends, for maximum precision and perfect parallelism with the chute.
- Distance between chute and spiral roller adjustable by means of a central handwheel, complete with position indicator.
- Min and max distance: from 1 to 60 mm

**TRANSMISSION GROUP:**

- Power: 0,09 kW, with torque limiter.
- Standard speed: 70 rpm
- Voltage: 400 Volt/50 Hz

**OPTIONAL**

With the installation of an MB Speed Control panel, it is possible to adjust the spiral roller rotation speed from min. 20 to max 100 rpm

**NOTE**

The spiral on the separator roller is made of PU with 10x10mm section and pitch 80 mm.